

Spring Identification Form

Please Complete First Sheet and Return

Refer to following pages if you need more information about the information being requested.

Part Numbers found on Spring:

1) Flat or Tapered: _____

2) Circle One: Eye/Eye Eye/Slipper Slipper/Slipper

Slipper/Slipper w/ Radius Leaf Z Leaf Hockey Stick

Air Leaf C Spring Other: _____

3) Width of Spring: _____

4) Number of Leaves:

Top Pads Leaves Bottom Pads Other

5) Stack Height: _____

6) Length (SE): _____

7) Length (LE): _____

8) Bushing Type (select which apply): Front Rear

Brass _____ _____

Threaded Steel _____ _____

Steel Encased Rubber _____ _____

Unsleeved Rubber _____ _____

Steel Encased Rubber w/ Integrated Pin . . _____ _____

Straddle Mount _____ _____

Two-Piece Rubber _____ _____

Spring Identification Form

Prior to completing form:

Check for **Part #s** on both the ends of the **Spring Eyes** (front & rear) _____

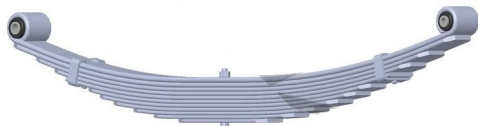
Check for **Part #s** on the underside of any **Spring Leaves** _____

Check for **Part #s** on the underside of any **Spring Clips** _____

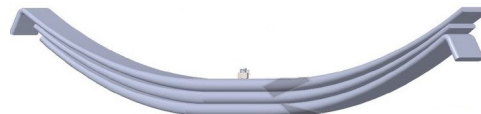
If no Spring Numbers are found, proceed with below.

1) Identify if spring leaves are either **Flat** or **Tapered**.

Flat Leaves – Have the same thickness from front to back

☐

Tapered Leaves – Are Thicker in the middle and thinner on the ends.

☐

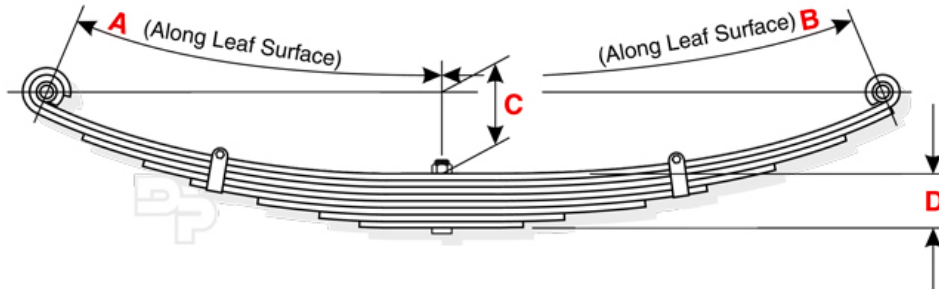
Please check the appropriate box that applies to your spring.

Spring Identification Form

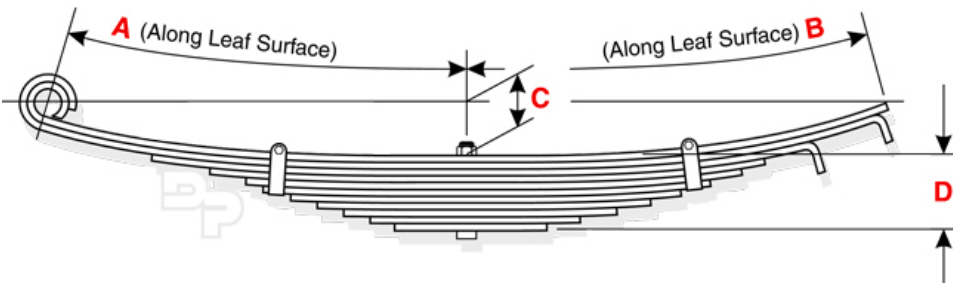
2) Identify Type of Spring (Please circle the type of your spring)

A – Eye / Eye

Have Eye and Bushing on both the Front & Back

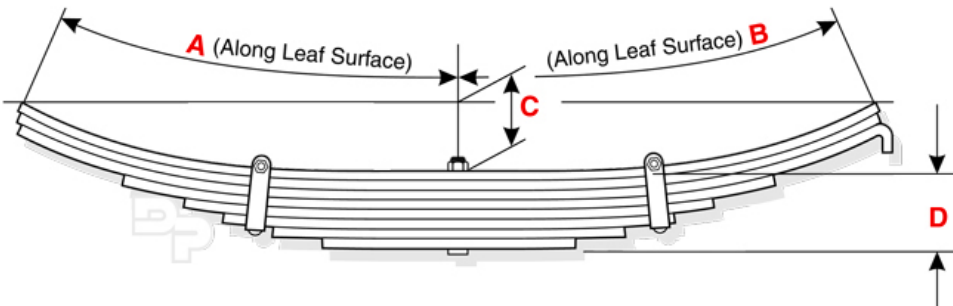


B – Eye / Slipper or Hook Has Eye on Front End and Slipper on Rear

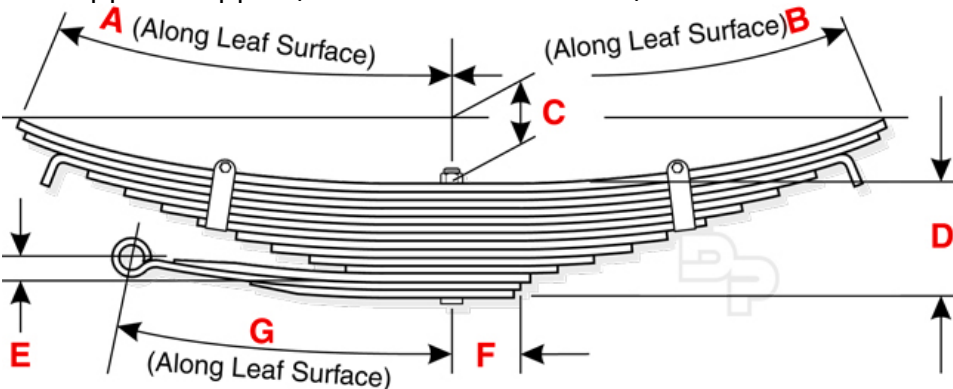


C- Slipper / Slipper

Has Slipper (hook) on both Front & Back

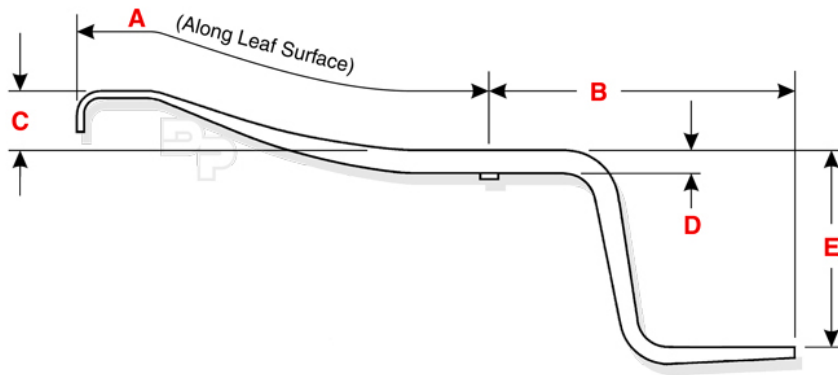


D – Slipper / Slipper (with Radius Rod or Leaf)

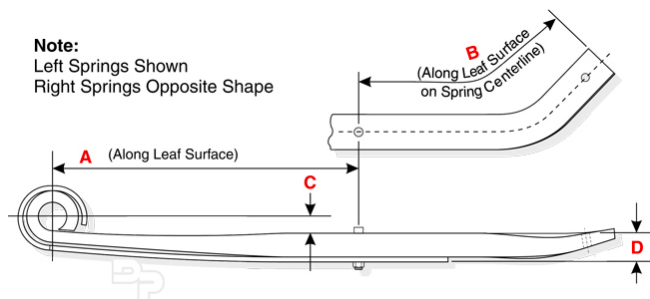
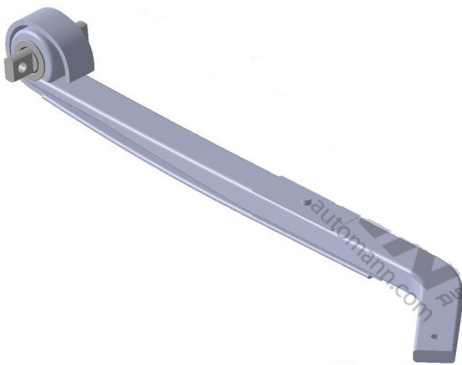


Spring Identification Form

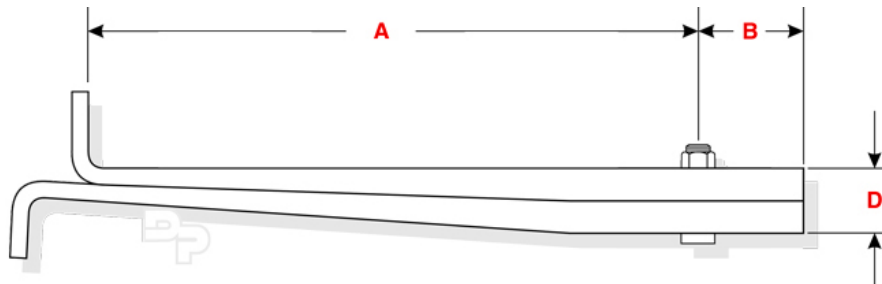
E – Z Leaf Z-Shaped Leaf (Air Spring mounts to the rear portion)



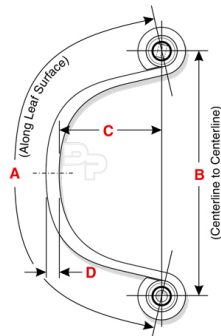
F – Hockey Stick



G – Air Leaf (Other)



H – C Spring



Spring Identification Form

3) Identify Width of Spring

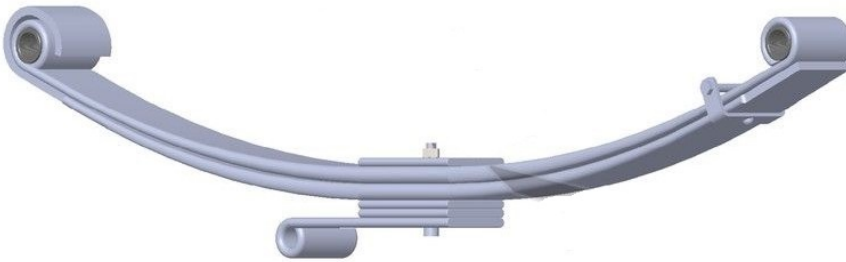
Measure across the width of the top leaf in the spring stack



Width = _____

4) Number of Leaves (Include both **Leaves** and **Pads**)

*Pads are very short plates at the top or bottom of the spring that do not extend out from the center of the spring, and only act as spacers.



Top Pads

Leaves

Bottom Pads

Other

Example - For the illustration above:

1 Pad

2 Leaves

2 Pads

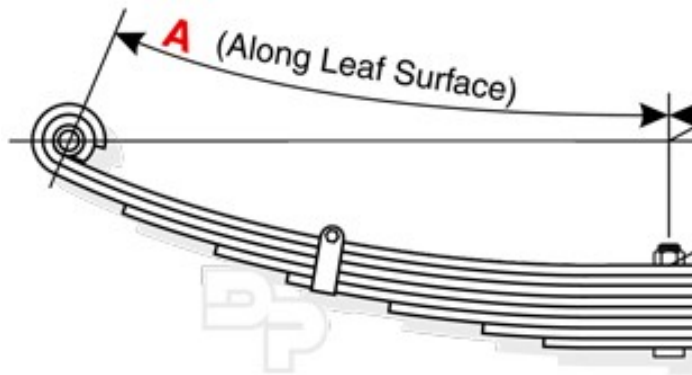
1 Shockeye

Spring Identification Form

5) Stack Height / Thickness – Measure entire stack (including pads) from bottom to top. [See dimension 'D' below]

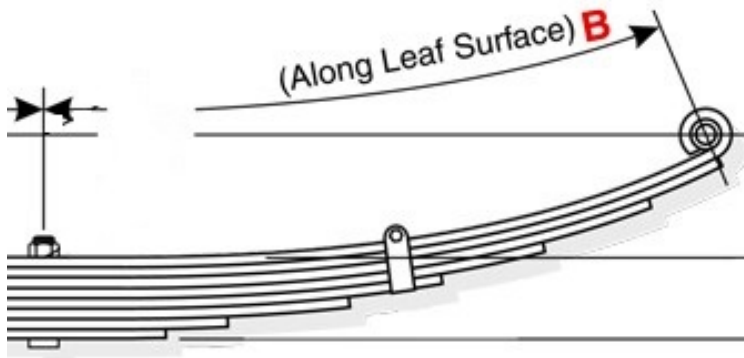


6) Length (SE) - Measure **Center Bolt to Center of Front Eye** (or end of slipper) along Leaf Surface. [See dimension 'A' below]



Length (SE) = _____

7) Length (LE) - Measure **Center Bolt to Center of Rear Eye** (or end of slipper) along Leaf Surface. [See dimension 'B' below]



Length (LE) = _____

Spring Identification Form

Depending on your application, it may be necessary to identify the bushings used in your spring to identify the proper part #. Please check with us before identifying the front and rear bushings.

8) Identify Bushings [Front & Rear]

Brass

Front

Rear



Threaded Steel

Front

Rear

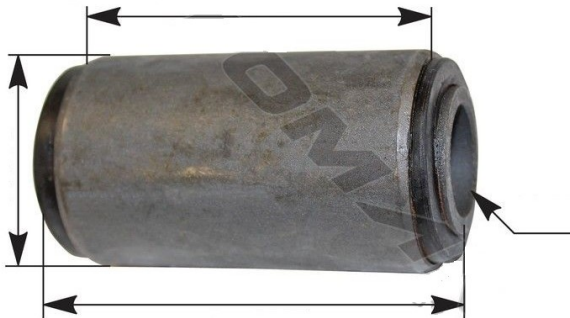


Threads:

Steel Encased Rubber

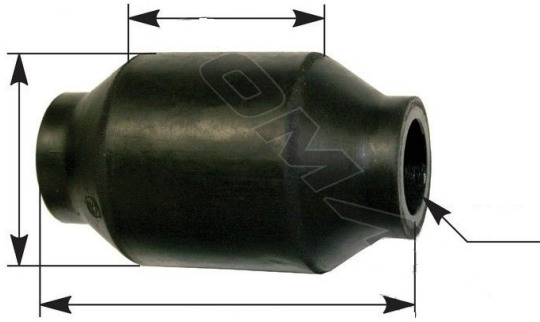
Front

Rear



Spring Identification Form

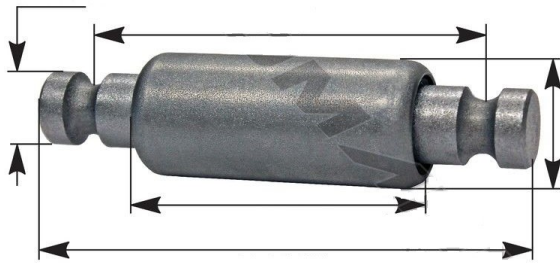
Unsleeved Rubber



Front

Rear

Steel Encased Rubber w/ Integrated Pin



Front

Rear

Straddle Mount



Front

Rear

Two-Piece Rubber



Front

Rear