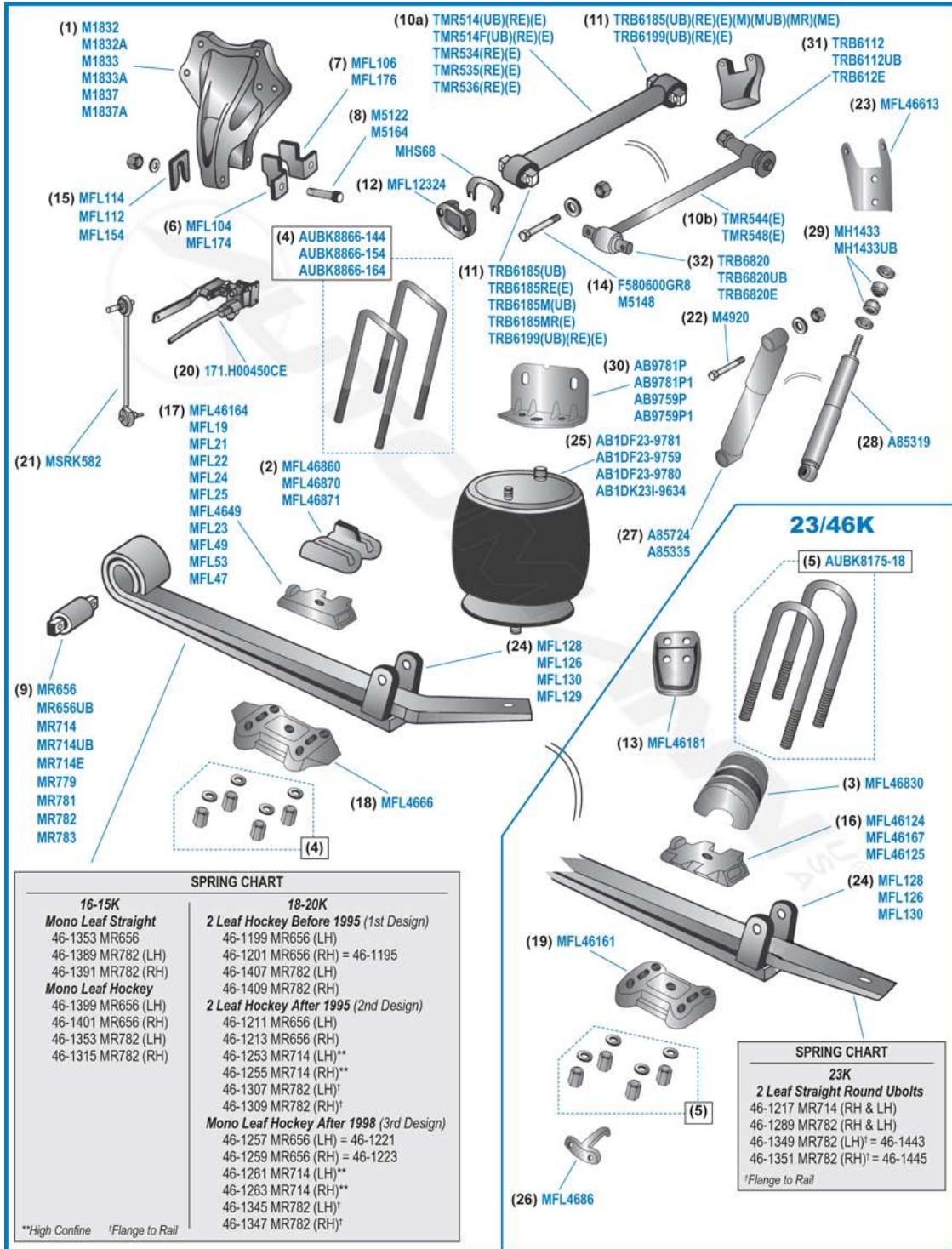


Suspension Schematic: Freightliner Rear Fas Airliner II (Freightliner & Sterling) (Revised)

Schematic Parts List





Home	Category	Brand	Make/Model	New Arrivals	Wizards	Schematics	Quick Links	Help
1	M1833	1613901000 / 1614031000 / 1614031002		2	Hanger	30mm Flange Thickness		
1	M1833A			2	Hanger	32mm Flange Thickness, Aluminum		
1	M1837	1515265000		2	Hanger	32mm Flange Thickness, Cast		
1	M1837A			2	Hanger	32mm Flange Thickness, Aluminum		
2	MFL46860	1614786000		0	Top Ubolt Pad	Verify, RH / LH, 0°, Sq. Ubolt		
2	MFL46870	1614787000		0	Top Ubolt Pad	Verify, LH, 2.5°, Sq. Ubolt		
2	MFL46871	1614787001		0	Top Ubolt Pad	Verify, RH, 2.5°, Sq. Ubolt		
3	MFL46830	1614783000		0	Top Ubolt Pad	Verify, RH / LH, 2.5°, Rd. Ubolt, Usually 23/46K		
4	AUBK8866-144	1123853000		2	Ubolt Kit	7/8" x 5-1/4" Special, x 14-1/2" Lg.		
4	AUBK8866-154	6813250325		2	Ubolt Kit	7/8" x 5-1/4" Special, x 15-1/2" Lg.		
4	AUBK8866-164	1123853XXX		2	Ubolt Kit	7/8" x 5-1/4" Special, x 16-1/2" Lg. (Special Length)		
5	AUBK8175-18	1123854000		2	Ubolt Kit	1.0" x 5.0" Rd. x 18.0" Lg., Usually 23/46K		
6	MFL104	6813252109		2	Wear Pad	LH, For Hanger, Use w/MR656 & MR714		
6	MFL174	1616456000		2	Wear Pad	LH, For Hanger, Use w/MR782 & MR783		
7	MFL106	6813252209		2	Wear Pad	RH, For Hanger, Use w/MR656 & MR714		
7	MFL176	1616456001		2	Wear Pad	RH, For Hanger, Use w/MR782 & MR783		
8	M5122	2309446500		4	Bolt	3/4"-10 x 5.0" Lg., For 3/4"-16 x 5-1/2" Lg. Use M5164		
9	MR656	6813250150		2	Bushing	2-1/2" OD x 7-1/2" OAL		
9	MR656UB			2	Bushing	Poly		
9	MR714	1613962000		2	Bushing	High Confinement, Repls. MR656, Poly MR714UB		
9	MR714E			2	Bushing	Premium Poly, High Confinement, Repls. MR656		
9	MR779			2	Bushing			
9	MR781			2	Bushing			
9	MR782	1616412001 / 1618035000		2	Bushing	Anti-walk, MR783 (070480054000) is Oversized		
10a	TMR514	6813266716		1	Rigid T/Rod	24.0", Tubular, w/TRB6185s, Poly TMR514UB		
10a	TMR514RE			1	Rigid T/Rod	24.0", Forged, Rotational w/TRB6185MRs, Poly TMR514E		
10a	TMR514F	1616749001		1	Rigid T/Rod	24.0", Forged, Non-Rebushable		
10a	TMR514FR			1	Rigid T/Rod	24.0", Forged, Rebushable, w/TRB6199s, Poly TMR514FRUB		
10a	TMR514FRE			1	Rigid T/Rod	24.0", Forged, Rotational, Rebushable, w/TRB6199 Bushings		
10a	TMR515	6813266316 / 1616749000		1	Rigid T/Rod	23.0", Tubular, w/TRB6185 Bushings, Poly TMR515UB		
10a	TMR515RE			1	Rigid T/Rod	23.0", Tubular, Rotational, w/TRB6185REs, Poly TMR515E		
10a	TMR534	1618972001 / 1615632001		1	Rigid T/Rod	23-13/16", Forged, Non-Rebushable		
10a	TMR534RE			1	Rigid T/Rod	23-13/16", Forged, Rebushable, w/TRB6185REs, Poly TMR534E		
10a	TMR535	1616749002		1	Rigid T/Rod	24-3/8", Forged, Non-Rebushable		
10a	TMR535RE			1	Rigid T/Rod	24-3/8", Forged, Rebushable, w/TRB6185REs, Poly TMR535E		
10a	TMR536	1618972000 / 1615632000		1	Rigid T/Rod	24-1/4", Forged, Non-Rebushable		
10a	TMR536RE			1	Rigid T/Rod	24-1/4", Forged, Rebushable, w/TRB6185RE's, Poly TMR536E		
10b	TMR544	1614149002		0	Rigid T/Rod	24-7/16" CtoC w/TRB6112 & TRB6820 Twist Down		
10b	TMR544E			0	Rigid T/Rod	24-7/16" CtoC w/TRB6112E & TRB6820E Twist Down		
10b	TMR548	1614149003		0	Rigid T/Rod	24-7/16" CtoC w/TRB6112 & TRB6820 Twist Up		
10b	TMR548E			0	Rigid T/Rod	24-7/16" CtoC w/TRB6112E & TRB6820E Twist Up		
11	TRB6185	A16119448000		0	T/Rod Bushing	Rubber, Non Rotational		
11	TRB6185UB			0	T/Rod Bushing	Poly, Non Rotational		
11	TRB6185RE			0	T/Rod Bushing	Rubber, Rotational		



Home	Category ▾	Brand ▾	Make/Model ▾	New Arrivals ▾	Wizards ▾	Schematics ▾	Quick Links ▾	Help ▾
11	TRB6185MUB			0	T/Rod Bushing	Poly, w/Metal Sleeve, Non Rotational		
11	TRB6185MR			0	T/Rod Bushing	Rubber, w/Metal Sleeve, Rotational		
11	TRB6185ME			0	T/Rod Bushing	Poly, w/Metal Sleeve, Rotational		
11	TRB6199			0	T/Rod Bushing	Rubber, Non Rotational, Poly TRB6199UB		
11	TRB6199RE			0	T/Rod Bushing	Rubber, Rotational, Poly TRB6199E		
12	MFL12324	1612324000		2	T/Rod Bracket	For Straddle End w/2@4-3/8" CtoC 5/8" Holes		
13	MFL46181	6813281840		4	Frame Bracket	Axle Rebound		
14	F580600GR8	2309444600		0	Bolt	T/Rod, 5/8"-18 x 6.0" Lg., OEM is Coarse		
14	M5148	2309444400		0	Bolt	T/Rod, 5/8"-18 x 4.0" Lg., OEM is Coarse		
15	MFL114	6813281384		0	Shim	1-1/8" Thk.		
15	MFL112	6813282184		0	Shim	1-1/16" Thk.		
15	MFL154	6813282284		0	Shim	1-1/32" Thk.		
16	MFL46124			2	Axle Seat	Verify, 2.0°, Used w/Rd. Ubolts		
16	MFL46167	1614677000		2	Axle Seat	Verify, 4.5°, Used w/Rd. Ubolts		
16	MFL46125	1614295000		2	Axle Seat	Verify, 5.5°		
17	MFL46164	1614140000		2	Axle Seat	Verify, 2.0°, Both, Double Wing, View Chart Pg. 16-115		
17	MFL19	6803250019		2	Axle Seat	Verify, 3.0°, No Wings, View Chart Pg. 16-115		
17	MFL21	6813281626		2	Axle Seat	Verify, 5.0°, No Wings, View Chart Pg. 16-115		
17	MFL22	1614071000		2	Axle Seat	Verify, 5.0°, No Wings, View Chart Pg. 16-115		
17	MFL24	1614049002		2	Axle Seat	Verify, 3.0°, LH Single Wing, View Chart Pg. 16-115		
17	MFL25	1614049001		2	Axle Seat	Verify, 3.0°, RH Single Wing, View Chart Pg. 16-115		
17	MFL4649	1614049000		2	Axle Seat	Verify, 3.0°, Both, Double Wing, View Chart Pg. 16-115		
17	MFL23	1614051000		2	Axle Seat	Verify, 5.5°, Both, Double Wing, View Chart Pg. 16-115		
17	MFL49	1614059002		2	Axle Seat	Verify, 3.0°, LH, View Chart Pg. 16-115		
17	MFL53	1614059001		2	Axle Seat	Verify, 3.0°, RH, View Chart Pg. 16-115		
17	MFL47	1614059000		2	Axle Seat	Verify, 3.0°, Both, View Chart Pg. 16-115		
18	MFL4666	1614266001		4	Ubolt Bottom Plate	Verify, 3.0°, 7/8" Ubolts		
19	MFL46161	1614016001		4	Ubolt Bottom Plate	Verify, 3.0°, Use w/Rd. Ubolts, Usually 23/46K		
20	171.H00450CE	H00450CA		1	Height Control Valve	Hadley - Model 450HCV		
20	171.H00450CEOE	H00450CA		1	Height Control Valve	Hadley - Model 450HCV		
21	MSRK582	HPB4503		1	Linkage Kit	3-5/8" to 19-5/8", Use w/All Hgt. Valves		
22	M4920	23094446600		0	Bolt	Upper Shock, 3/4"-16 x 6.0" Lg., OEM is Coarse, For Eye Type Shock Only		
23	MFL46613	1613958000		2	Shock Bracket	Verify, Stamped 3/4" Bolt		
24	MFL128	6813202535		2	Shock Bracket	Verify, LH, Lower Spring Assembly		
24	MFL126	6813202435		2	Shock Bracket	Verify, RH, Lower Spring Assembly		
24	MFL130	6813261578		2	Shock Bracket	Verify, Lower Spring Assembly		
24	MFL129	1615260000		2	Shock Bracket	Verify, Lower Spring Assembly		
25	AB1DF23-9781	6813200017 (Aluminum) / A1614004000 (Aluminum) / 1616773000 (Steel)		2	Air Spring	46K Uses AB9781P or AB9781P1 Brackets, Verify w/Air Spring Catalog, was 9780 40K (Plastic), 9782 (Steel)		
25	566.CT64266	6813200017 (Aluminum) / A1614004000 (Aluminum) / 1616773000 (Steel)		2	Air Spring	46K Uses AB9781P or AB9781P1 Brackets, Verify w/Air Spring Catalog, was 9780 40K (Plastic), 9782 (Steel)		



Home	Category	Brand	Make/Model	New Arrivals	Wizards	Schematics	Quick Links	Help
23	AB1DF23-9780	1613810000 (Plastic) / 1613840000 (Plastic)		2	Air Spring		46K Uses AB9781P or AB9781P1 Brackets, Verify w/Air Spring Catalog, was 9780 40K (Plastic), 9782 (Steel)	
25	566.CT67473	1613810000 (Plastic) / 1613840000 (Plastic)		2	Air Spring		46K Uses AB9781P or AB9781P1 Brackets, Verify w/Air Spring Catalog, was 9780 40K (Plastic), 9782 (Steel)	
25	566.ER9780	1613810000 (Plastic) / 1613840000 (Plastic)		2	Air Spring		46K Uses AB9781P or AB9781P1 Brackets, Verify w/Air Spring Catalog, was 9780 40K (Plastic), 9782 (Steel)	
25	AB1DF23-9759	A1618335000 A1618335001		2	Air Spring		Uses AB9759P or AB9759P1 Brackets, Verify w/Air Spring Catalog	
25	566.CT68208	A1618335000 A1618335001		2	Air Spring		Uses AB9759P or AB9759P1 Brackets, Verify w/Air Spring Catalog	
25	AB1DK231-9634	1614263000 / 1615443000 / 1618333000 / 1614263001 / 1615443001		2	Air Spring		Uses AB9781P or AB9781P1 Brackets, Verify w/Air Spring Catalog	
25	566.CT65361	1614263000 / 1615443000 / 1618333000 / 1614263001 / 1615443001		2	Air Spring		Uses AB9781P or AB9781P1 Brackets, Verify w/Air Spring Catalog	
25	566.ER9634	1614263000 / 1615443000 / 1618333000 / 1614263001 / 1615443001		2	Air Spring		Uses AB9781P or AB9781P1 Brackets, Verify w/Air Spring Catalog	
26	MFL4686	1614586000		4	Seat Retainer		Verify, 0°, Usually 23/46K	
27	A85724	1615817000 / 1618708000 / 61310434 / 61310478 / XC4518080BA		2	Shock		Verify w/Shock Catalog, Eye/Eye, A89443, ES158/ES159	
27	A85335	1616577000		2	Shock		M2BC, 10-15K Low Pro, Verify w/Shock Catalog, EB3/EB3, Uses MH1432 Bushings	
28	A85319	1613947000 / 6813250400		2	Shock		Verify w/Shock Catalog, Stud/Eye, A89428, S21/ES150	
29	MH1433			0	Shock Bushing		5/8" ID, For Stud Type Ends, Poly MH1433UB	
30	AB9781P	1617010001 / 6033 / 3900		2	Air Spring Bracket			
30	AB9781P1	1617010002 / 6034 / 3901		2	Air Spring Bracket			
30	AB9759P	1614365000 / 6013 / 3874		2	Air Spring Bracket			
30	AB9759P1	1614365001 / 6012 / 3876		2	Air Spring Bracket			
31	TRB6112	44697000		0	Bushing		Used in TMR544 & TMR548 T/Rods, Poly TRB6112UB	
31	TRB6112E			0	Bushing		Poly, Rotational	
32	TRB6820	44695000		0	Bushing		Used in TMR544 & TMR548 T/Rods, Poly TRB6820UB	
32	TRB6820E			0	Bushing		Poly, Rotational	
SC	46-1353			0			16-15K Mono Leaf Straight MR656	
SC	46-1389			0			16-15K Mono Leaf Straight MR782 (LH)	
SC	46-1391			0			16-15K Mono Leaf Straight MR782 (RH)	
SC	46-1399			0			16-15K Mono Leaf Hockey MR656 (LH)	
SC	46-1401			0			16-15K Mono Leaf Hockey MR656 (RH)	
SC	46-1353			0			16-15K Mono Leaf Hockey MR782 (LH)	
SC	46-1315			0			16-15K Mono Leaf Hockey MR782 (RH)	
SC	46-1315OE			0			16-15K Mono Leaf Hockey MR782 (RH)	
SC	46-1199			0			18-20K 2 Leaf Hockey Before 1995 (1st Design) MR656 (LH)	
SC	46-1201			0			18-20K 2 Leaf Hockey Before 1995 (1st Design) MR656 (RH) Can Use 46-1195	
SC	46-1407			0			18-20K 2 Leaf Hockey Before 1995 (1st Design) MR782 (LH)	
SC	46-1409			0			18-20K 2 Leaf Hockey Before 1995 (1st Design) MR782 (RH)	
SC	46-1211			0			18-20K 2 Leaf Hockey After 1995 (2nd Design) MR656 (LH)	
SC	46-1213			0			18-20K 2 Leaf Hockey After 1995 (2nd Design) MR656 (RH)	
C	46-1253			0			18-20K 2 Leaf Hockey After 1995 (2nd Design) MR714 (LH), High Confine	



Home	Category	Brand	Make/Model	New Arrivals	Wizards	Schematics	Quick Links	Help
SC	46-1307			0				18-20K 2 Leaf Hockey After 1995 (2nd Design) MR782 (LH), Flange to Rail
SC	46-1307OE			0				18-20K 2 Leaf Hockey After 1995 (2nd Design) MR782 (LH), Flange to Rail
SC	46-1309			0				18-20K 2 Leaf Hockey After 1995 (2nd Design) MR782 (RH), Flange to Rail
SC	46-1309OE			0				18-20K 2 Leaf Hockey After 1995 (2nd Design) MR782 (RH), Flange to Rail
SC	46-1257			0				18-20K Mono Leaf Hockey After 1998 (3rd Design) MR656 (LH) Can Use 46-1221
SC	46-1259			0				18-20K Mono Leaf Hockey After 1998 (3rd Design) MR656 (RH) Can Use 46-1223
SC	46-1261			0				18-20K Mono Leaf Hockey After 1998 (3rd Design) MR714 (LH), High Confine
SC	46-1263			0				18-20K Mono Leaf Hockey After 1998 (3rd Design) MR656 MR714 (LH), High Confine
SC	46-1345			0				18-20K Mono Leaf Hockey After 1998 (3rd Design) MR7821 (LH), Flange to Rail
SC	46-1345OE			0				18-20K Mono Leaf Hockey After 1998 (3rd Design) MR7821 (LH), Flange to Rail
SC	46-1347			0				18-20K Mono Leaf Hockey After 1998 (3rd Design) MR656 MR714 (RH), Flange to Rail
SC	46-1347OE			0				18-20K Mono Leaf Hockey After 1998 (3rd Design) MR656 MR714 (RH), Flange to Rail
SC	46-1217			0				23K 2 Leaf Straight Round Ubolts MR714 (RH & LH)
SC	46-1217OE			0				23K 2 Leaf Straight Round Ubolts MR714 (RH & LH)
SC	46-1289			0				23K 2 Leaf Straight Round Ubolts MR782 (RH & LH)
SC	46-1349			0				23K 2 Leaf Straight Round Ubolts MR782 (LH), Flange to Rail, Can Use 46-1443
SC	46-1349OE			0				23K 2 Leaf Straight Round Ubolts MR782 (LH), Flange to Rail, Can Use 46-1443OE
SC	46-1351			0				23K 2 Leaf Straight Round Ubolts MR782 (RH), Flange to Rail, Can Use 46-1445
SC	46-1351OE			0				23K 2 Leaf Straight Round Ubolts MR782 (RH), Flange to Rail, Can Use 46-1445OE